

Name

Class



www.MathsTeacherHub.com

Types of graph

(9 – 1) Topic booklet

These questions have been collated from previous years GCSE Mathematics papers.

You must have: Ruler graduated in centimetres and millimetres, protractor, pair of compasses, pen, HB pencil, eraser.

Total Marks

Instructions

- Use **black** ink or ball-point pen.
- Fill in the boxes** at the top of this page with your name, centre number and candidate number.
- Answer **all** questions.
- Answer the questions in the spaces provided
– *there may be more space than you need.*
- Diagrams are NOT accurately drawn, unless otherwise indicated.
- You must **show all your working out.**
- If the question is a **1F** question you are not allowed to use a calculator.
- If the question is a **2F** or a **3F** question, you may use a calculator to help you answer.

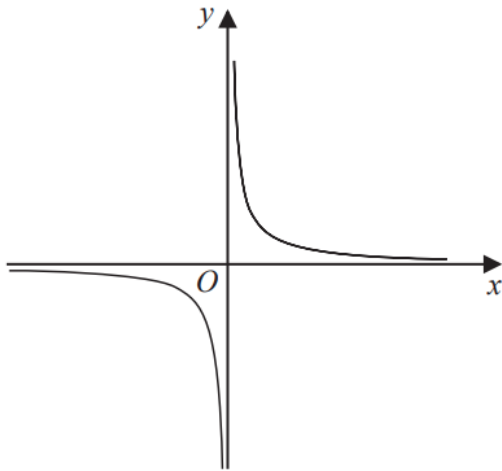
Information

- The marks for **each** question are shown in brackets
– *use this as a guide as to how much time to spend on each question.*

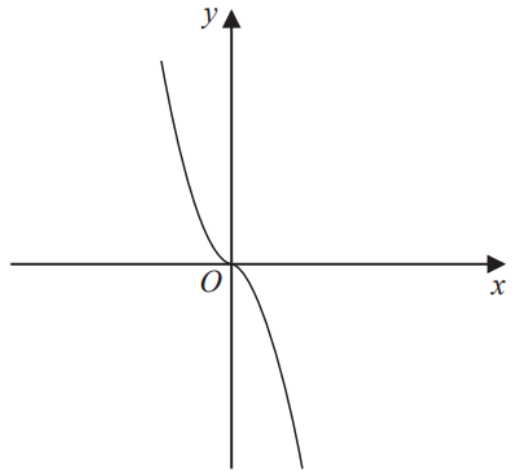
Advice

- Read each question carefully before you start to answer it.
- Keep an eye on the time.
- Try to answer every question.
- Check your answers if you have time at the end.

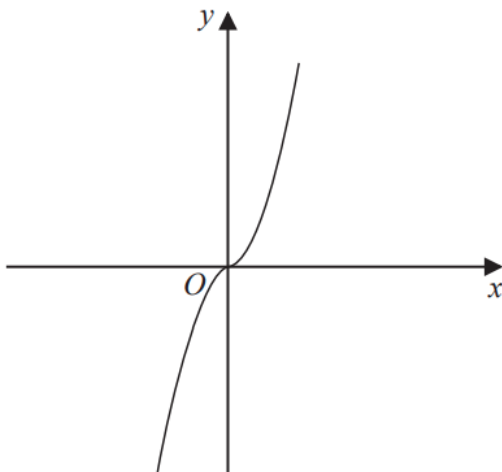
22 The diagram shows four graphs.



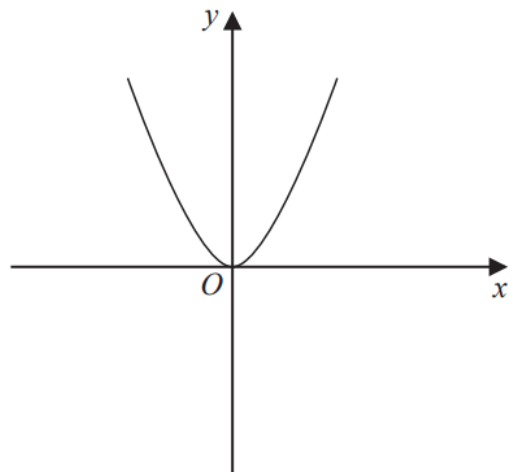
Graph A



Graph B



Graph C



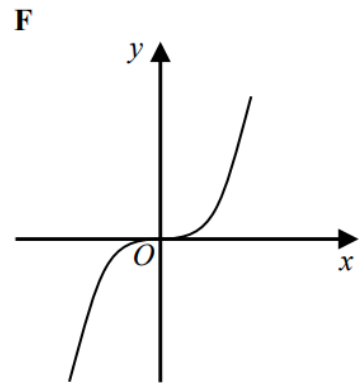
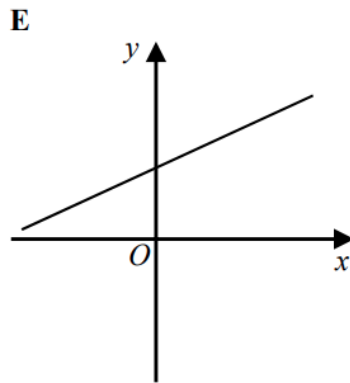
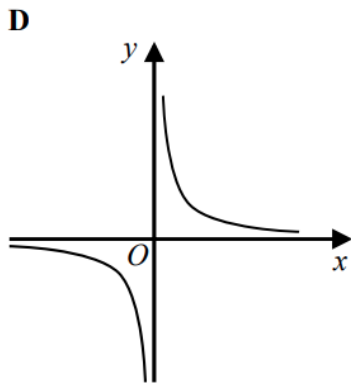
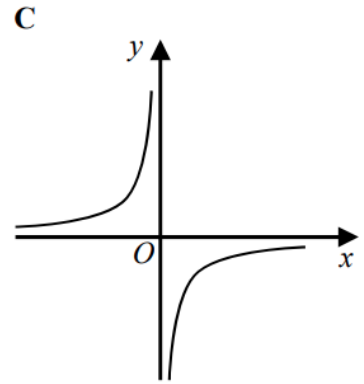
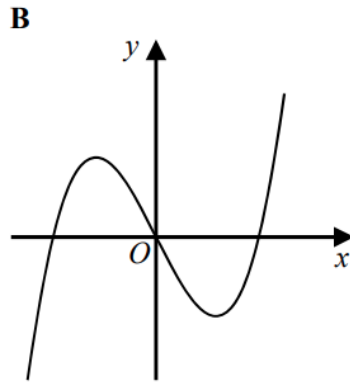
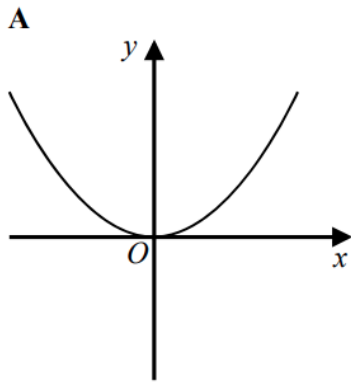
Graph D

Each of the equations in the table is the equation of one of the graphs.

Complete the table.

Equation	Letter of graph
$y = -x^3$	
$y = x^3$	
$y = x^2$	
$y = \frac{1}{x}$	

25 Here are six graphs.



Write down the letter of the graph that could have the equation

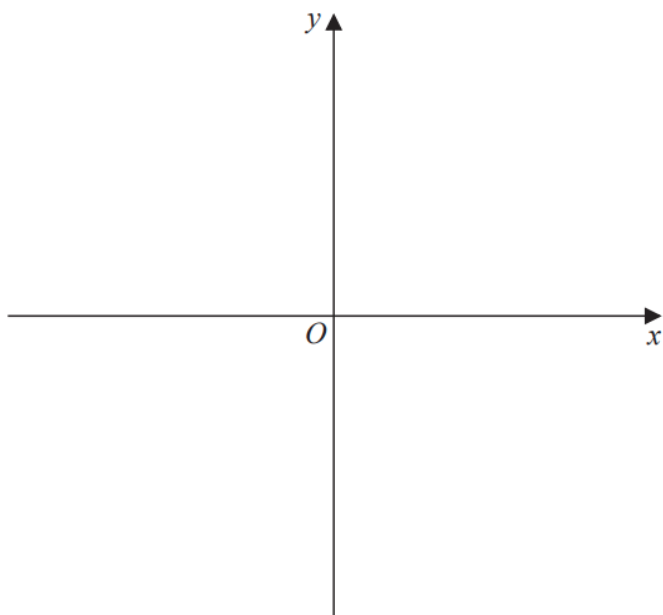
(a) $y = x^3$

.....
(1)

(b) $y = \frac{1}{x}$

.....
(1)

28 Sketch the graph of $y = \frac{1}{x}$



November 2021 – Paper 3F

(Total for Question 28 is 2 marks)